



Course Prefix/Number/Title: DAST 123 Dental Assisting Radiology Lab II

Number of Credits: 1

Course Description:

This course is a continuation of DAST 122 Dental Assisting Radiology Lab I. Dental Assisting students will refine their skills in intraoral radiology by exposing diagnostic intraoral and extraoral digital images on manikins and patients. The student will also study radiographic interpretation basics. Appropriate infection control techniques and radiation safety precautions required in a dental setting will be implemented.

Pre-requisites:

Completion of the following courses with a letter grade of "C" or above:

- DENT 116 Dental Anatomy
- DENT 119 Radiology Lecture
- DAST 122 Dental Assisting Radiology Lab I

Course Objectives:

1. Place, expose and correctly place (mount) diagnostic intraoral and extraoral digital dental images on manikins and patients.
2. Use critical thinking skills to assess exposed images and use known strategies to correct any errors.
3. Interpret dental images for normal anatomy and pathologies.
4. Provide ethical and competent care in the dental radiology clinical setting, including radiologic techniques for patients with special needs.
5. Implement the necessary radiation safety precautions that must be followed in the dental setting.
6. Demonstrate appropriate infection control techniques according to the CDC for Infection Control in the Dental Setting.

Instructor: Ricki Hill

Office: 2nd Floor Faculty Offices

Office Hours: Fridays 8-9am or upon appointment

Phone: 701-858-3183

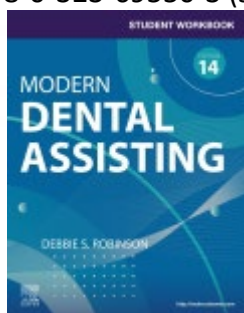
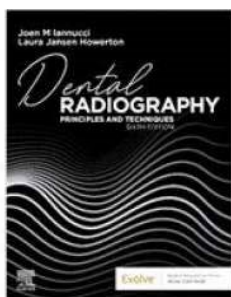
Email:

Lab Schedule:

This course meets for 8 weeks, beginning the first week of spring semester and ending mid-semester. Students will meet twice per week for two hours each class. You will need to find radiology patients.

Textbook(s): (from fall semester courses)

Ianucci, J., Howerton, L. (2022). *Dental Radiography: Principles and Techniques*. 6th Ed. St. Louis, MO. Elsevier. ISBN: 978-0-323-69550-3 (same text as DENT 119 Radiology Lecture)



Robinson, D. (2024). *Modern Dental Assisting*. 14th Ed. St. Louis, MO. Elsevier. ISBN: 978-0-443-12031-2

Course Requirements:

Attendance is mandatory for all labs and clinical sessions.

Student must dress in clinical attire.

Student must complete this course with a “C” or above to continue in the dental assisting program.

Tentative Course Outline:

| Week | Topics to be covered |
|-------------|--|
| Week 1 | Course Overview Radiation Health Techniques Review Timed FMX on manikins |
| Weeks 2 – 7 | FMX on/manikins and patients Interpret dental images for normal anatomy and pathologies |
| Week 8 | Take FMX’s if needed for requirements Class Activity on interpreting dental images for normal anatomy and pathologies |

General Education Competency/Learning Outcome(s) OR CTE Competency/Department Learning Outcome(s):

Employs industry-specific skills for workplace readiness.

Relationship to Campus Focus: Nature, Technology, and Beyond

Dakota College Bottineau dental programs are designed to prepare students to meet the needs of communities by applying evidence-based decision making, using cutting-edge technology,

and integrating quality and safety competencies into their dental programs. Each course within the program serves as a foundation for clinical practice in the dental assisting and dental hygiene professions. To meet the demands of the every-changing field of dentistry, students are taught to value life-long learning.

Classroom Policies:

Attendance is mandatory in all lectures, labs and clinical sessions.

Grading

Course and lab/clinic grades are based on a variety of activities and assignments designated by the faculty. The criteria by which grades for each lecture and clinical course are included in the course syllabus distributed to students. Students have access to and should review the learning management system grading calculation method.

Students are responsible to know what their grades are during the course. Please review the gradebook frequently. If an assignment or exam in the student's gradebook says the assignment or exam has not been submitted or has not been entered, it is then treated as a fact the student didn't do the assignment or exam as outlined in the directions. Make sure your assignments are submitted before the due date to assure timely submission. Please see your Dakota Dental Program handbook for grading policies, in addition to the policies listed below.

Grades

Students must earn a minimum grade of "C" with a maintained 2.0 GPA or better in all required dental program courses. Students who fail a theory or lab/clinical course will be dismissed from the dental assisting program. A final grade of "D" or "F" is considered to be a failed grade. If a student has unsatisfactory grades, he/she should contact the instructor as soon as possible for a remediation plan.

Assignments/Tests/Labs/Clinics: All assignments must be completed and submitted on time in the manner specified by the faculty. Students may fail the course if all assignments are not completed.

Late/makeup work: Late work will not be accepted (student will receive a zero) unless previously arranged with the instructor or impacted by extenuating circumstances. Upon approval, if an assignment is turned in within one week of the due date, there will be a 5% deduction from the assignment grade. Extenuating circumstances will be evaluated by the faculty for the course.

Late tests: If the student fails to take a test on time, he/she will need to contact the instructor to arrange a time to take the exam. There will be a 10% deduction from the test grade, for tests taken late. If a test isn't taken within a week of the test date, you will receive a zero for that test. Extenuating circumstances will be evaluated by the faculty for the course.

This course will be evaluated by:

This course will be graded by total points earned out of total possible points. The student must earn a 75% or above in this course to continue in the dental assisting program.

| Skills/Assignments | Number | Total Points possible |
|------------------------------|----------------|------------------------------|
| Timed FMX on Manikin | 1 x 100 points | 100 |
| FMX on patients | 2 x 100 points | 200 |
| Panoramic radiograph | 1 x 51 points | 51 |
| Daily Lab Activities | 16 x 8 points | 128 |
| Total Possible Points | | 479 |

The following grade scale will be used:

| | | |
|---|----------|---------------|
| A | 92 - 100 | 441 and above |
| B | 84 – 91 | 402 - 440 |
| C | 75– 83 | 359 - 401 |
| D | 67 – 74 | 321 and below |
| F | Below 67 | |

Classroom Etiquette:

- Be punctual to lectures, labs and clinics
- Avoid any activity that may cause distraction during class.
- Incivility will not be tolerated
- Use of mobile devices and related applications and cameras are not allowed to be used, unless it is for a class activity.
- Children are not allowed in the classroom.

Active Learning:

In addition to educational strategies such as reading, listening and reflecting, when appropriate this class makes use of learning techniques commonly known as active learning. Students should expect to participate in active learning techniques such as discussions and presentations, small group activities, writing, problem-solving, case studies, role-playing, etc. These activities promote analysis, synthesis, and evaluation of class content in order to improve student learning outcomes.

Course Study Expectations:

Commitment to learning is important to success. For every semester credit you are taking in a class, (e.g., 3 credit course = 9 hours per week) the student should schedule three hours to read, study, and devote to your course, outside of class.

Attendance Policy:

The Dakota College Dental Programs support the college policy on attendance as stated in your college catalog. The dental programs implement strict attendance policies for classroom, lab and clinical experience. Students are expected to attend all lecture, lab and clinical hours. (See the Attendance Policy in the Dental Program Handbook)

Regular, punctual attendance demonstrates professional behavior and responsibility. Absences may make it impossible for a student to meet course objectives and may result in failure of the course. A student may be excused from class, lab or clinic with the approval of the instructor. It is the student's responsibility to make arrangements to fulfill missed assignments with the appropriate faculty member. All makeup work may have a deduction in lecture, lab or clinic. All missed hours in lab or clinic must be made up with one hour for each hour missed. If a student has more than 25% absence in any classroom, lab or clinic session, it may result in course failure. **If you must be absent, (e.g., illness) please inform the instructor as soon as possible.** The instructor's contact information is on the first page of this syllabus.

Questions:

If you have questions or need clarification on anything to do with this course, please reach out to the instructor. The instructor can be reached by the contact information on the syllabus.

Student Email Policy:

Dakota College at Bottineau is increasingly dependent upon email as an official form of communication. A student's campus-assigned email address will be the only one recognized by the Campus for official mailings. The liability for missing or not acting upon important information conveyed via campus email rests with the student.

Academic Integrity:

According to the DCB Student Handbook, students are responsible for submitting their own work. Students who cooperate on oral or written examinations or work without authorization share the responsibility for violation of academic principles, and the students are subject to disciplinary action even when one of the students is not enrolled in the course where the violation occurred. The Code detailed in the Academic Honesty/Dishonesty section of the Student Handbook will serve as the guideline for cases where cheating, plagiarism or other academic improprieties have occurred.

Disabilities or Special Needs:

Students with disabilities or special needs (academic or otherwise) are encouraged to contact the instructor and Disability Support Services.

Title IX:

Dakota College at Bottineau (DCB) faculty are committed to helping create a safe learning environment for all students and for the College as a whole. Please be aware that all DCB employees (other than those designated as confidential resources such as advocates,

counselors, clergy and healthcare providers) are required to report information about such discrimination and harassment to the College Title IX Coordinator. This means that if a student tells a faculty member about a situation of sexual harassment or sexual violence, or other related misconduct, the faculty member must share that information with the College's Title IX Coordinator. Students wishing to speak to a confidential employee who does not have this reporting responsibility can find a list of resources on the DCB Title IX webpage.

DAST 123 Radiology Lab II Topic Schedule

| Week and Course Objectives | Lab Activities |
|--|---|
| Week 1 Objectives: 1 - 6 | Lab 1 1. Syllabus Overview 2. Review emergency shut off location for radiology units 3. Review recordkeeping procedures <ul style="list-style-type: none"> ○ Medical History form ○ Patient X-ray consent form ○ Consent form to forward x-rays to patient's dentist ○ Document procedure in patient's electronic record 4. Practice taking images you have difficulty, on manikin, to review techniques Lab 2 1. Take FMX on manikin, evaluate images, retakes, if needed, document in patient record <ul style="list-style-type: none"> ○ Time limit - 45 minutes. ○ You must earn a 75% or above to pass this competency. |
| Week 2 Objectives: 1 - 6 | Lab 1 1. 1/2 class takes FMX on patients, includes self-evaluation, any retakes, documentation 2. 1/2 class activity on Identification of Restorations, Dental Materials and Foreign Objects (resource Ch. 32 Radiology Text book) Lab 2 1. 1/2 class takes FMX on patients, includes self-evaluation, any retakes, documentation |

| | |
|------------------------------------|---|
| | <ol style="list-style-type: none"> 1/2 class activity on Identification of Restorations, Dental Materials and Foreign Objects (resource Ch. 32 Radiology Text book) |
| Week 3 Objectives: 1 - 6 | <p>Lab 1</p> <ol style="list-style-type: none"> 1/2 class takes FMX on patients, includes self-evaluation, any retakes, documentation 1/2 class activity on Identification of Restorations, Dental Materials and Foreign Objects (resource Ch. 32 Radiology Text book) <p>Lab 2</p> <ol style="list-style-type: none"> 1/2 class takes FMX on patients, includes self-evaluation, any retakes, documentation 1/2 class activity on Identification of Restorations, Dental Materials and Foreign Objects (resource Ch. 32 Radiology Text book) |
| Week 4 Objectives: 1 - 6 | <p>Lab 1</p> <ol style="list-style-type: none"> 1/2 class takes FMX on patients, includes self-evaluation, any retakes, documentation 1/2 class activity on Interpretation of Dental Caries (resource Ch. 33 Radiology Text book) <p>Lab 2</p> <ol style="list-style-type: none"> 1/2 class takes FMX on patients, includes self-evaluation, any retakes, documentation 1/2 class activity on Interpretation of Dental Caries (resource Ch. 33 Radiology Text book) |
| Week 5 Objectives: 1 - 6 | <p>Lab 1</p> <ol style="list-style-type: none"> 1/2 class takes FMX on patients, includes self-evaluation, any retakes, documentation 1/2 class activity on Interpretation of Dental Caries (resource Ch. 33 Radiology Text book) <p>Lab 2</p> <ol style="list-style-type: none"> 1/2 class takes FMX on patients, includes self-evaluation, any retakes, documentation |

| | |
|--|---|
| | <p>2. 1/2 class activity on Interpretation of Dental Caries (resource Ch. 33 Radiology Text book)</p> |
| <p>Week 6 Objectives: 1 - 6</p> | <p>Lab 1</p> <ol style="list-style-type: none"> 1. 1/2 class takes FMX on patients, includes self-evaluation, any retakes, documentation 2. 1/2 class activity on Interpretation of Periodontal Disease (resource Ch. 34 Radiology Text book) <p>Lab 2</p> <ol style="list-style-type: none"> 1. 1/2 class takes FMX on patients, includes self-evaluation, any retakes, documentation 2. 1/2 class activity on Interpretation of Periodontal Disease (resource Ch. 34 Radiology Text book) |
| <p>Week 7 Objectives: 1 - 6</p> | <p>Lab 1</p> <ol style="list-style-type: none"> 1. 1/2 class takes FMX on patients, includes self-evaluation, any retakes, documentation 2. 1/2 class activity on Interpretation of Trauma, Pulpal Lesions, and Periapical Lesions (resource Ch. 35 Radiology Text book) <p>Lab 2</p> <ol style="list-style-type: none"> 1. 1/2 class takes FMX on patients, includes self-evaluation, any retakes, documentation 2. 1/2 class activity on Interpretation of Trauma, Pulpal Lesions, and Periapical Lesions (resource Ch. 35 Radiology Text book) |
| <p>Week 8 Objectives: 1 - 6</p> | <p>Finish any outstanding FMX's Participate in class activity regarding image interpretation</p> |