

Senate Appropriations Committee

67th Legislative Session

January 18, 2021

Steve Shirley, PhD, President

Jerry Migler, PhD, Campus Dean

Brent Winiger, VP for Administration & Finance



Statutory Authority

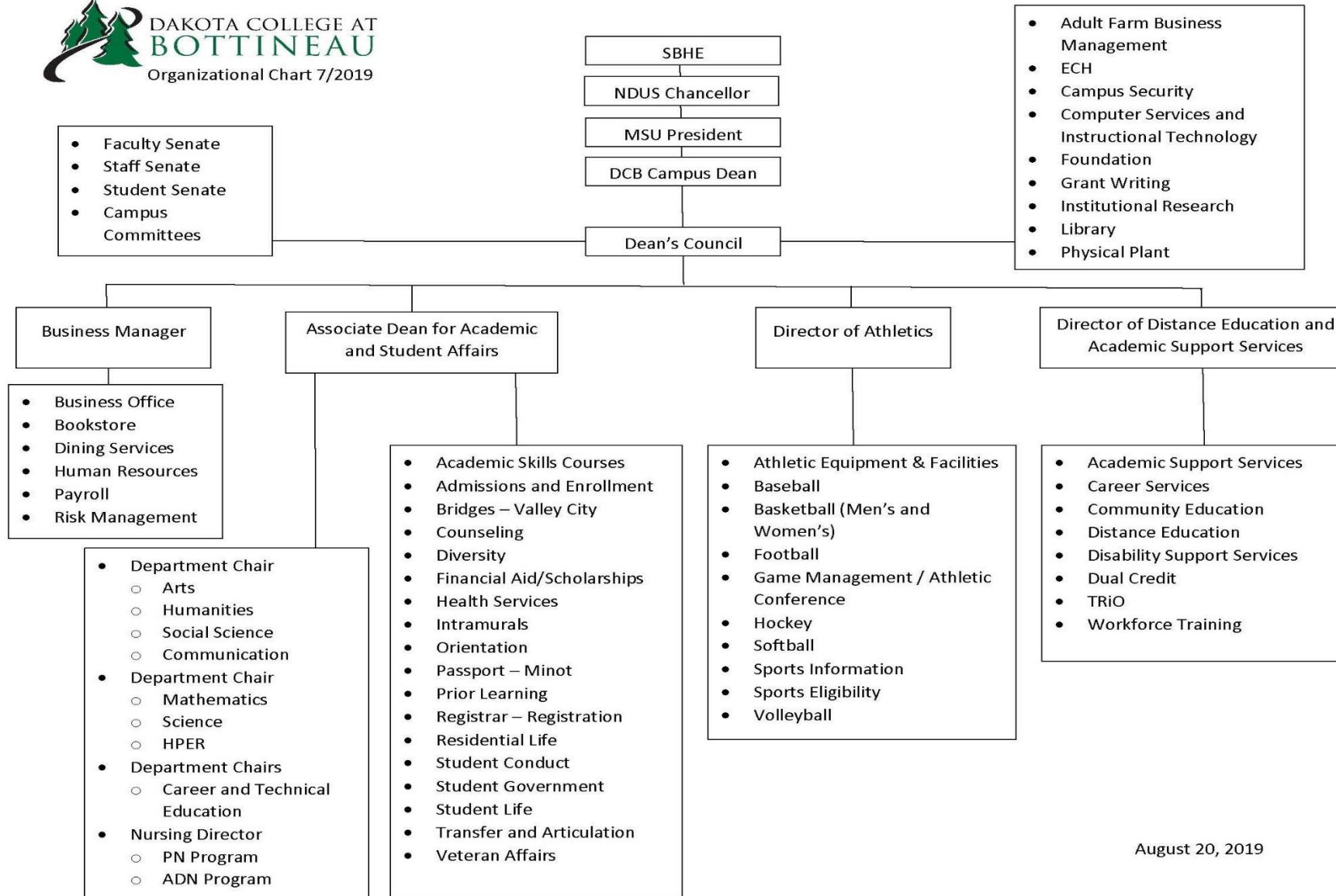
ND Constitution Article XIX, Section 216

Agency Description

A referendum in 1894 stated that a school of forestry should be located in Bottineau, North Dakota, to provide, in addition to forestry, comprehensive community college curricula. The North Dakota Century Code also identified the role of Dakota College at Bottineau as offering programs in agriculture, forestry, and horticulture. Since then, the college has expanded its natural resources programming, and has also added programs in other areas that serve the needs of its constituents. For example, business, information technology, allied health, and general education/liberal arts courses now comprise a majority of the college's inventory of program offerings for students enrolled in transfer, career and technical curriculums. For over 100 years, as the North Dakota School of Forestry, NDSU Bottineau, MSU-Bottineau, and Dakota College at Bottineau, the institution has prepared men and women to become contributing members of society.

An institutional name change from Minot State University-Bottineau to Dakota College at Bottineau did not change the college's affiliation with Minot State University. That affiliation continues to grow even stronger.





August 20, 2019

Audit Findings

The June 30, 2020 NDUS financial audit report is being finalized by the SAO and is scheduled to be published in January 2021. Our communications with the SAO indicate there are no findings or recommendations.



Major Accomplishments

- Increased headcount and full-time equivalent (FTE) enrollment each year since the fall of 2015. Headcount has grown from 692 to 1006 and FTE has increased from 459 to 553.
- Implemented a new program for dual-credit students titled Leading to Advanced Educational Preparation (LEAP). An expansion of the program, LEAP Beyond, will be launched in 2020-21 academic year for students interested in receiving an Associate Degree while still in high school.
- Doubled enrollment in the college's nursing program over the past five years from 47 to over 100. The college's two nursing programs (practical nursing and associate degree nursing) are collectively the college's largest career and technical education programs.
- Partnered with the Heart of America Medical Center in Rugby to re-establish a satellite PN program in the fall of 2019. DCB partnered with LRSC and WSC to offer an agriculture program on the Bottineau campus in the fall of 2019. A new Industrial Hemp program and a Diagnostic Medical Sonography program were launched in 2020.
- Continued the fourth year of its partnership with Trinity Health in Minot in which the Trinity Health Foundation is providing \$100,000 per year for five years to support the college's nursing programs in Minot.
- Began the initial steps to implement DCB's first ever major capital campaign, which is a \$4 million project to develop the college's Old Main Building into a Center for Nursing and Allied Health.
- Installed a new heating plant back-up boiler in the spring of 2020. HVAC improvements in the college's Nelson Science Center were completed in the summer of 2020.
- Completed the final design for the new dining/student center. This project will be financed through \$2.5 million of revenue bonds approved by the 2019 legislature. Construction is scheduled to begin in the late spring of 2021.
- The college financial ratios meet all the requirements for accreditation by the Higher Learning Commission.

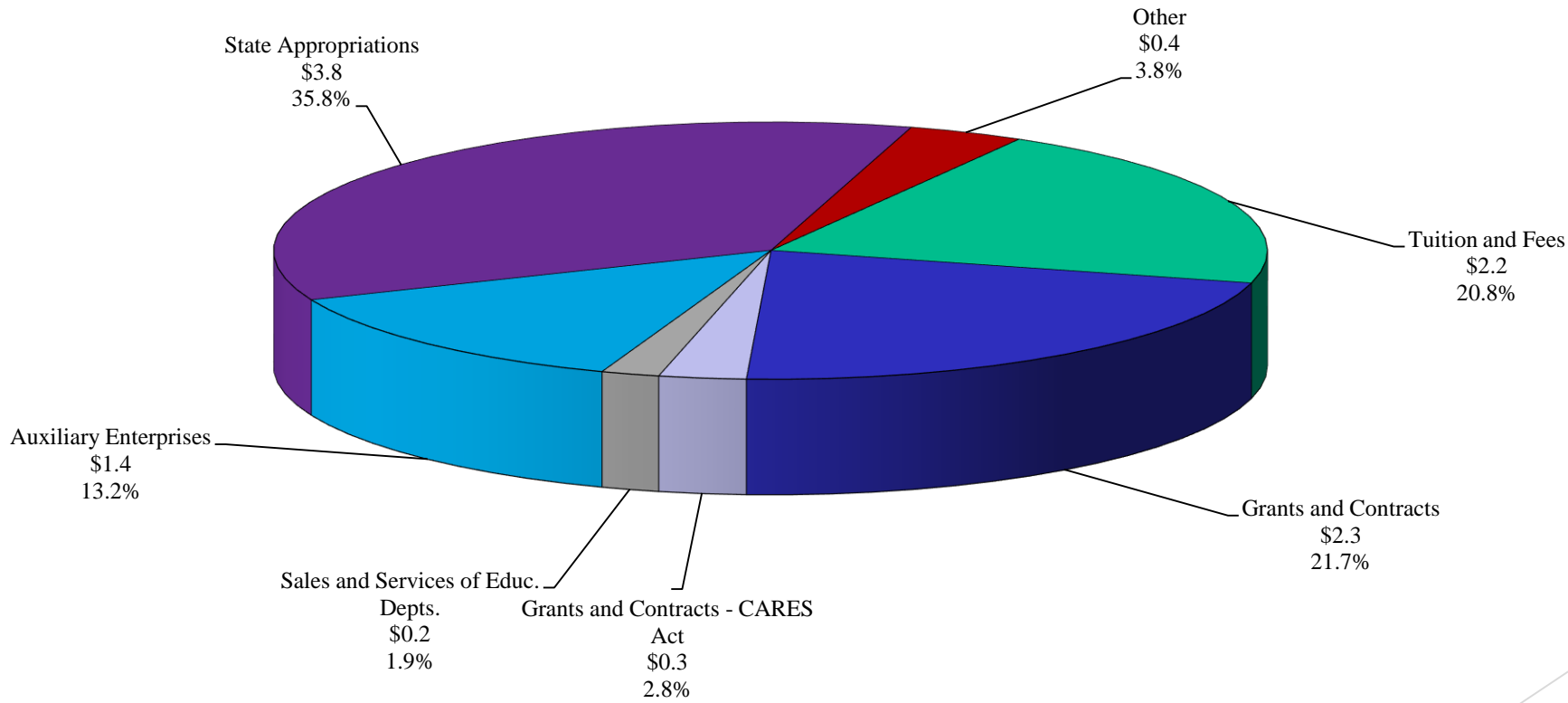


Next Biennium Goals and Plans

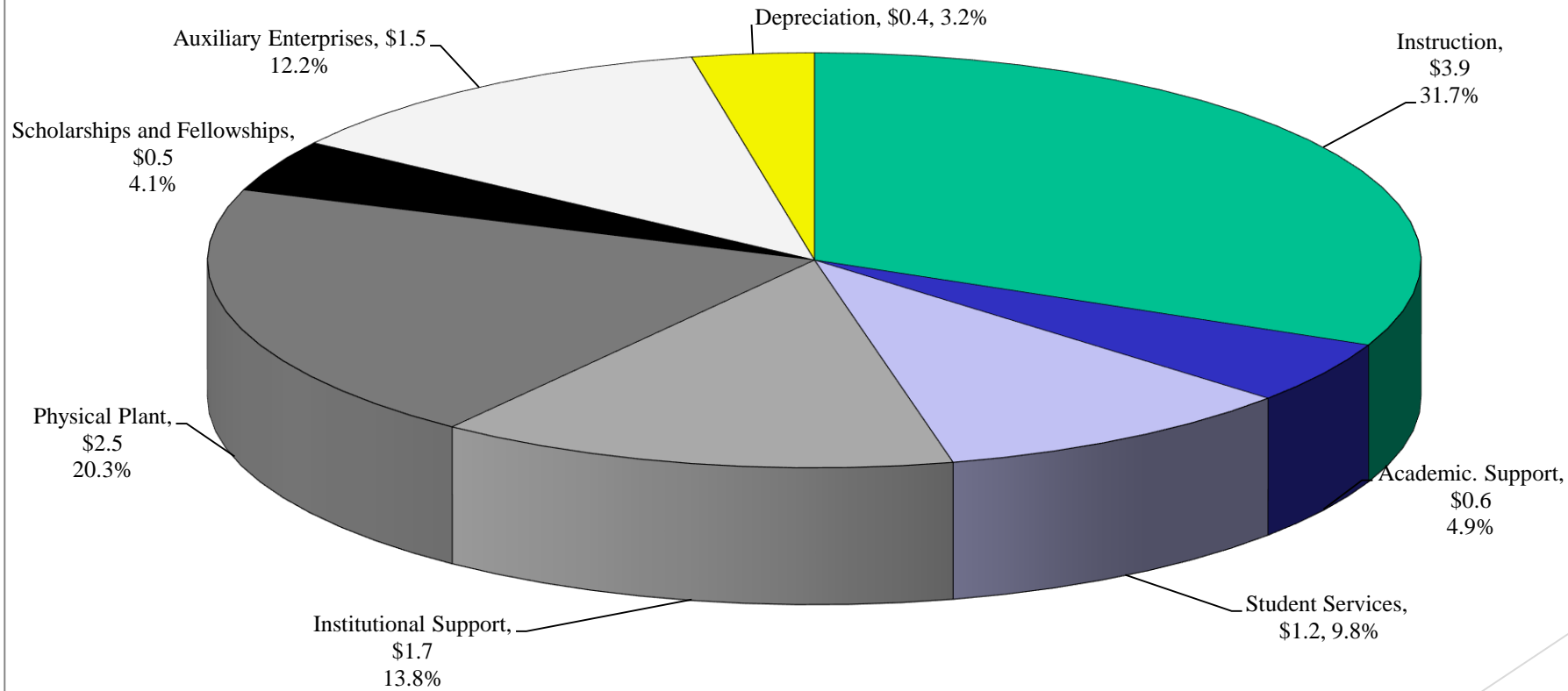
- In collaboration with Minot State University and the City of Minot, oversee the renovation of a vacated Trinity Health building into a center for Postsecondary Career and Technical Education in the Minot and north central regions of the state. This project will serve as an important cornerstone in providing well-trained front-line employees for the region's workforce.
- Create a significant opportunity for major growth of the college's nursing and allied health programs on the Bottineau campus by renovating the Old Main Building into a Center for Rural Health Education.
- Complete the requirements for becoming one of the first NACEP (National Alliance of Concurrent Enrollment Partnerships) accredited colleges in North Dakota.



Dakota College at Bottineau
Total Revenue, Excluding Capital
Fiscal Year 2020
(\$ in millions)
Total Revenue \$10.6 million



Dakota College at Bottineau
Operating Expenses by Function
(excluding capital items and other nonoperating expenses)
Fiscal Year 2020
(in millions)
Total Operating Expenses: \$12.3 million



Dakota College at Bottineau

Comparison of 2019-21 Base Budget to 2021-23 SBHE Request and Executive Recommendation

	2019-21 Base Level	Requested Adjustments	2021-23SBHE Needs-Based Budget	Executive Recommendation	Difference from 2019-21 Base Level	Difference from SBHE Needs-Based Budget
Campus Operations	\$ 21,440,606	\$ 2,261,838	\$ 23,702,444	\$ 22,697,203	\$ 1,256,597	\$ (1,005,241)
Capital Assets	\$ 114,007	-	\$ 114,007	\$ 4,114,007	\$ 4,000,000	\$ 4,000,000
Plant Improvement Carryover						
Capital Projects - Non-State Funded						
Capital Projects - Non-State Carryover						
Operating Carryover						
Total Appropriation	\$ 21,554,613	\$ 2,261,838	\$ 23,816,451	\$ 26,811,210	\$ 5,256,597	\$ 2,994,759
General Fund	\$ 7,740,826	\$ 1,964,535	\$ 9,705,361	\$ 8,626,489	\$ 885,663	\$ (1,078,872)
Special Funds	\$ 13,813,787	\$ 297,303	\$ 14,111,090	\$ 18,184,721	\$ 4,370,934	\$ 4,073,631
Total Funding Sources	\$ 21,554,613	\$ 2,261,838	\$ 23,816,451	\$ 26,811,210	\$ 5,256,597	\$ 2,994,759
Total Positions FTE	82.29			91.86		



DAKOTA COLLEGE AT BOTTINEAU
2021-2023 General Funds Budgets Comparison

	SBHE/College Request		Executive Recommendation
2019-2021 General Fund Base Budget	\$ 7,740,826		\$ 7,740,826
Less Tier 1 Funds	\$ 114,007		\$ 114,007
General Fund Operating	\$ 7,626,819		\$ 7,626,819
 Base Budget Request			
- Formula increase due to credit	\$ 1,393,782		\$ 1,393,782
- Salary increases	\$ 243,493		\$ 176,977
- Funding formula reduction			\$ (685,096)
 Systemwide Projects/Initiatives (Optional Requests)			
- Student share of 3%/3% salary increases	\$ 98,895		
- Institutions specific initiatives (2.5%/credit)	\$ 228,365		
Total Base General Fund Increase Requested	\$ 1,964,535		\$ 885,663
 <u>2021-2023 General Fund Base Budget</u>	<u>\$ 9,591,354</u>	<u>25.8%</u>	<u>\$ 8,512,482</u>
			<u>11.6%</u>
 One-Time Capital Funding			
Old Main Renovation for Nursing/Allied Health (\$ 2 million request from general funds, \$2 million from other funds)	\$ 2,000,000		
 CTE Center/Minot - Start-up operational funds	\$ 500,000		



DAKOTA COLLEGE AT BOTTINEAU
Impact of SBHE Needs-Based Budget vs. Executive Recommendation
2021-2023 Biennium

	<u>SBHE</u>		<u>Executive</u>	
	<u>Request</u>		<u>Recommendation</u>	
Salary Increase Funding	\$ 342,388		\$ 176,977	
Funding Formula Adjustments	\$ 1,393,782		\$ 708,686	
Net Adjustment to Funding	\$ 1,736,170		\$ 885,663	
New Expenses - General Fund - Salary Increase	\$ 243,493	3%	\$ 176,977	2%
New Expenses - Tuition, Auxiliary, Local Funded	\$ 98,895	3%	\$ 65,930	2%
	<u>\$ 1,393,782</u>		<u>\$ 642,756</u>	
Estimated Revenue from a 3% increase to student tuition charges			\$ 218,160	
Necessary Expense Reductions			N/A	
Approx. number of FTE position reductions req'd			N/A	



GRANT FUNDING RELATING TO THE PANDEMIC

	<u>Awarded</u>	<u>Expended to 12/30/20</u>
HEERF HIGHER EDUCATION EMERGENCY RELIEF FUNDS 50% student financial aid 50% institutional pandemic expenses, such as PPE, disinfecting supplies	\$ 500,000	\$ 450,419
CRF CORONAVIRUS RELIEF FUNDS (Governor) PPE, classroom upgrades to support hybrid and distance delivery, HVAC air quality upgrades	\$ 804,631	\$ 727,749
GEER GOVERNOR'S EMERGENCY EDUCATION RELIEF FUNDS Curriculum development for new online/hybrid CTE programs, enhanced technology for delivery of hybrid courses	\$ 187,500	\$ 5,809
	\$ 1,492,131	\$ 1,183,977 *

* Does not include payables and commitments



2019-2021 Biennium Capital Projects

▶ Appropriated funding of \$1 million

▶ Phase II of Nelson Science Center

- ▶ HVAC system renovation
- ▶ Completed September, 2020
- ▶ Final cost of \$597,648

▶ Back-up boiler

- ▶ Completed in spring of 2020
- ▶ Final cost of \$252,233

▶ Knudson Student Center

- ▶ Remaining funds of \$150,119 for renovations that support the Dining Center relocation, to be completed in the spring of 2021

▶ Revenue Bond funding of \$2.5 million

- ▶ Architect hired, design work completed, project to be posted for bids this month
- ▶ Projected opening in early 2022



Postsecondary CTE in Minot

► Strategic Goal

- Develop a postsecondary center for career and technical education in Minot to serve the North Central region of the state
- Operational in 2022
- Discussions with Trinity Health and City of Minot to repurpose an existing Trinity Health facility
- Proposed programs for start-up (based on local industry needs and support):
 - Information Technology, Hospitality Management, Allied Health (CNA, CMA, Medical Assistants), Golf Course Management, Dealer Parts and Supply Chain Management



Funding Request for CTE Center - Minot Region

- ▶ Capital funding has been allocated from the City of Minot in the amount of approximately \$3.5 million
- ▶ Projected opening date - Fall, 2022
- ▶ Operational funding is needed for staffing and program start-up
- ▶ \$500,000 is requested for staffing and program costs, which will be incurred in the second year of the biennium

Center for Rural Health Education

► Strategic Goal

- The Bottineau campus of Dakota College will become a major provider of nursing and other allied health professionals to serve rural health care facilities in the North Central region of the state
 - Triple the number of graduates in the Practical Nursing and Associate Degree Nursing programs from approximately 25 per year to 75 per year over a 5-8 year period
 - Provide training for Certified Nurse Assistants, Certified Medication Aides and Medical Assistants and other similar professions
 - Develop other new programs as requested by area health providers
- Repurpose the College's existing Old Main Building to become a modern, state-of-the-art facility for Nursing and Allied Health Education that serves both the needs of both campus-based students and area health providers



Center for Rural Health Education

▶ Capital Campaign/Capital Project

▶ Estimated Cost

▶ \$4 million

▶ \$2 million to be raised by the DCB Foundation

▶ Approx. \$400,000 already committed

▶ \$2 million requested from state funding

▶ #1 ranking in SBHE priority list of capital projects for 2021 legislative session



Thank You for your time and support!

