



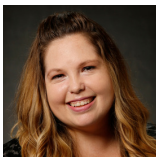
ASSOCIATE OF ARTS or ASSOCIATE OF SCIENCE The LEAP Beyond Program

The LEAP Beyond program is available to dual credit/early entry high school students. Students must have approval from their high school administrator. By completing the LEAP Beyond program, students will receive either an Associate in Science or Associate in Art degree alongside their high school diploma.

Benefits

- **Time Savings** — Students can save a year of college coursework
- **Cost Savings** — Only \$142.76/credit (students that qualify for the Bank of ND Scholarship can receive free tuition for two classes per year)
- **Flexible Delivery** — Students can take this program completely online or through a combination of online, face-to-face, and ITV delivery
- **Transferability** — The general education courses in this program will transfer to other colleges in the North Dakota University System
- **College Advisor** — Assistance in developing individualized academic plan

CONTACT INFORMATION



Kayla O'Toole
Director of Distance Education
Ph: 701-228-5479
kayla.otoole@dakotacollege.edu



Stacy Allard
LEAP Advisor
Ph: 701-228-5623
stacy.allard@dakotacollege.edu

Dakota College at Bottineau
105 Simrall Blvd., Bottineau, ND 58318-1198

WWW.DAKOTACOLLEGE.EDU/LEAP



START SMALL...GO FAR
WITH DAKOTA COLLEGE AT BOTTINEAU

COURSES REQUIRED

Associate of Arts

Example outline – courses can also be taken during summer semester.

Sophomore Year – Fall Semester

Arts & humanities – any ND:HUM course 3 cr
Course elective – select with advisor 3 cr
Course elective – select with advisor 3 cr

Sophomore Year – Spring Semester

Social science – any ND:HIST or ND:SS course 3 cr
Math, science, & technology
– any ND:COMPSC course 3 cr
Course elective – select with advisor 3 cr

Junior Year – Fall Semester

Communications – COMM 110 3 cr
Arts & humanities – any ND:HUM course 3 cr
Social science – any ND:HIST or ND:SS course 3 cr
Course elective – select with advisor 3 cr

Junior Year – Spring Semester

Math, science, & technology
– any ND:LABSC course 4 cr
Wellness – HPER 100 2 cr
Course elective – select with advisor 3 cr

Senior Year – Fall Semester

Communications – ENGL 110 3 cr
Social science – any ND:HIST or ND:SS course 3 cr
Math, science, & technology
– any ND:MATH course 3-4 cr

Senior Year – Spring Semester

Communications – ENGL 120 or ENGL 125 3 cr
Arts & Humanities – ENGL 220 or ENGL 238 3 cr
Course elective – select with advisor 3 cr
Social science – any ND:HIST or ND:SS course 3 cr

All courses subject to change.

Associate of Science

Example outline – courses can also be taken during summer semester.

Sophomore Year – Fall Semester

Arts & humanities – any ND:HUM course 3 cr
Course elective – select with advisor 3 cr
Course elective – select with advisor 3 cr

Sophomore Year – Spring Semester

Social science – any ND:HIST or ND:SS course 3 cr
Math, science, & technology
– any ND:COMPSC course 3 cr
Course elective – select with advisor 3 cr

Junior Year – Fall Semester

Communications – COMM 110 3 cr
Arts & humanities – any ND:HUM course 3 cr
Social science – any ND:HIST or ND:SS course 3 cr
Course elective – select with advisor 4 cr

Junior Year – Spring Semester

Math, science, & technology
– any ND:LABSC course 4 cr
Wellness – HPER 100 2 cr
Course elective – select with advisor 3 cr

Senior Year – Fall Semester

Communications – ENGL 110 3 cr
Math, science, & technology
– any ND:LABSC course 4 cr
Math, science, & technology
– any ND:MATH course 4 cr

Senior Year – Spring Semester

Communications – ENGL 120 or ENGL 125 3 cr
Course elective – select with advisor 3 cr
Math, science, & technology – any ND:COMPSC,
ND:LABSC, or ND:MATH course 3 cr

All courses subject to change.

Course selection

ND:COMPSC

CSCI 101 – Intro to Computers (3 cr)
CSCI 289 – Social Implications in Computing
Technology (3 cr)

ND:HIST

HIST 103 – U.S. History to 1877 (3 cr)
HIST 104 – U.S. History Since 1877 (3 cr)
HIST 220 – ND History (3 cr)

ND:MATH

MATH 103 – College Algebra (4 cr)
MATH 104 – Finite Math (3 cr)
MATH 107 – Precalculus (4 cr)
MATH 210 – Elementary Statistics (4 cr)

ND:HUM

ART 110 – Intro to Visual Arts (3 cr)
ENGL 220 – Intro to Literature (3 cr)
ENGL 238 – Children's Literature (3 cr)
HUM 101 – Intro to Humanities (3 cr)
HUM 102 – Intro to Humanities II (3 cr)

ND:SS

ECON 201 – Principles of Microeconomics (3 cr)
ECON 202 – Principles of Macroeconomics (3 cr)
PSYC 111 – Intro to Psychology (3 cr)
PSYC 250 – Developmental Psychology (3 cr)
PSYC 270 – Abnormal Psychology (3 cr)
PSYC 280 – Intro to Health Psychology (3 cr)
SOC 110 – Intro to Sociology (3 cr)

ND:LABSC

BIOL 111 – Concepts of Biology (4 cr)
BIOL 115 – Concepts of Anatomy and
Physiology (4 cr)
BIOL 124 – Environmental Science (4 cr)
BIOL 202 – Microbiology (4 cr)
BIOL 220 – Anatomy & Physiology I (4 cr)
BIOL 221 – Anatomy & Physiology II (4 cr)
GEOL 105 – Physical Geology (4 cr)
PHYS 120 – Fundamentals of Physics (4 cr)